

# EMTECH® BS4568 / IEC61386 CLASS 3 CONDUIT PIPE

**EMTECH**  
™

GI Conduit  
BS4568 / IEC61386 Class 3

EMTECH BS4568 / IEC 61386 CLASS 3 20MM

EMTECH BS4568 / IEC 61386 CLASS 3 25MM

**EMTECH**  
™

EMT-3 Conduit Box



ITE West



Orchard Residences



Marina Barrage



Buckley 18



IM Flash

Copyright © 2008-2016 Tan Teck Seng Electric Co. Pte. Ltd. All rights reserved.  
Material data listed in this catalog supercedes all information in previous publications.



Tan Teck Seng Electric Co. (Pte) Ltd

137 Kaki Bukit Avenue 1, Shun Li Industrial Park, Singapore 416003  
ttselect@tts.sg

Tel: 6747-8833 Fax: 6747 0370

All product dimension and material specification is as accurate as possible at time of publication.

Tan Teck Seng Electric Co. Pte. Ltd. reserves the right to change the design or specification of its products without notification.

Whilst utmost care has been taken to maintain accuracy in the data, the company does not hold any responsibility for errors and accepts no liability for the use or interpretation of this data.

# EMTECH® BS4568 / IEC61386 CLASS 3 CONDUIT PIPE



陳德盛電器(私人)有限公司  
TAN TECK SENG ELECTRIC CO. (PTE) LTD.

Tan Teck Seng Electric Co Pte Ltd Company has been established since 1973. Being a supplier in the electrical industries for the past 3 decades, its core businesses lie in supplying electrical products to mostly M&E contractors and people in the construction and building related industries. Electrical products such as cable support system, conduits and accessories and lightning protection system are then provided.

Having been in the business of electric fittings for more than thirty years, we pride ourselves for the valuable knowledge and experience in the needs and design of conduit accessories to meet the challenge of the new millennium. In this catalogue, we offer a broad and comprehensive range of galvanized steel and brass conduit accessories which will match the demands of any projects using BS4568 / IEC61386 conduits. It is our hope that you will find the product details informative and applicable to your needs. We further assures our customers that we will continue to expand and improve the range of products.

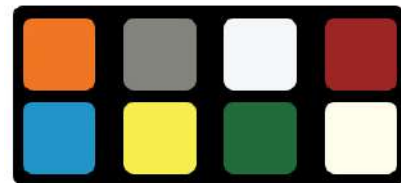


EMTECH Brand BS4568 / IEC61386 Class 3 Galvanised Steel Conduit					
Product Code	Nominal Size	Outer Diameter		Wall Thickness ±	Weight per Length
		Min	Max		
	mm	mm	mm	mm	kg/length
CP-20-P	20	19.7	20.0	1.6±0.15	±2.70
CP-25-P	25	24.6	25.0	1.6±0.15	±3.40
Standard length 3.75m Other length available upon request.					

Epoxy Powder Coated  
Conduits & Accessories are available  
to suit your M&E services requirement.



ORANGE GREY WHITE RED



BLUE YELLOW ARMY IVORY  
GREEN

Colour Chart (Standard Colors)

The accuracy of colors shown in this chart are only as close as the printing process will allow.  
Other colors available upon request.

Copyright © 2008-2016 Tan Teck Seng Electric Co. Pte. Ltd. All rights reserved.  
Material data listed in this catalog supersedes all information in previous publications.



Tan Teck Seng Electric Co. (Pte) Ltd

137 Kaki Bukit Avenue 1, Shun Li Industrial Park, Singapore 416003

ttselect@tts.sg

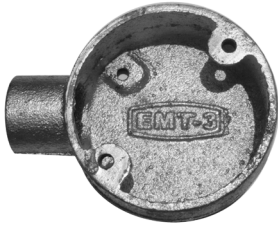
Tel: 6747-8833 Fax: 6747 0370

All product dimension and material specification is as accurate as possible at time of publication.

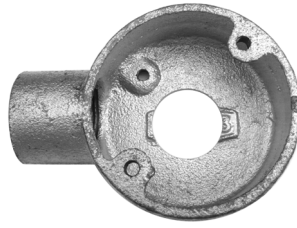
Tan Teck Seng Electric Co. Pte. Ltd. reserves the right to change the design or specification of its products without notification.

Whilst utmost care has been taken to maintain accuracy in the data, the company does not hold any responsibility for errors and accepts no liability for the use or interpretation of this data.

# EMT-3 CONDUIT BOX



1 WAY BOX /  
END BOX  
CF-1W-20-B3, CF-1W-25-B3



1 WAY BOX WITH HOLE /  
END BOX WITH HOLE  
CF-1W-H-20-B3, CF-1W-H-25-B3



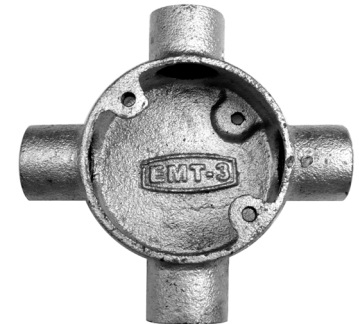
2 WAY BOX /  
THROUGH BOX  
CF-2W-20-B3, CF-2W-25-B3



ANGLE BOX  
CF-AN-20-B3, CF-AN-25-B3

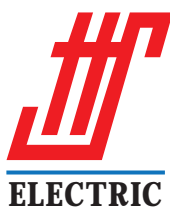


3 WAY BOX /  
TEE BOX  
CF-3W-20-B3, CF-3W-25-B3



4 WAY BOX /  
CROSS BOX  
CF-4W-20-B3, CF-4W-25-B3

CONDUIT BOXES	
MODEL	EMT-3
MATERIAL	CAST IRON
FINISH	GALVANIZED
FIXING CENTRE	50.5MM, TAPPED 2BA (EARTH LUG HOLE 1 X 2BA)
SIZE	20MM, 25MM



陳德盛電器(私人)有限公司  
TAN TECK SENG ELECTRIC CO. (PTE) LTD.

137 Kaki Bukit Avenue 1  
Shun Li Industrial Park Singapore 416003  
Tel: (65) 6747 8833 Fax: (65) 6747 0370  
E-mail: ttselect@singnet.com.sg  
Website: www.tts.sg

Copyright © 2010-2016 Tan Teck Seng Electric Co. Pte. Ltd. All rights reserved.  
Material data listed in this catalog supersedes all information in previous publications.

All product dimension and material specification is as accurate as possible at time of publication.  
Tan Teck Seng Electric Co. Pte. Ltd. reserves the right to change the design or specification of its products without notification.  
Whilst utmost care has been taken to maintain accuracy in the data, the company does not hold any responsibility for errors and accepts no liability for the use or interpretation of this data.

# EMTECH GI CONDUIT PIPE ACCESSORIES



BAR SADDLE (SB-20, SB-25)	
MATERIAL	GALVANIZED STEEL
FINISH	GALVANIZED
AVAILABLE SIZES	20MM, 25MM



COUPLING (S-20, S-25-E)	
MATERIAL	GALVANIZED STEEL
FINISH	GALVANIZED
AVAILABLE SIZES	20MMM, 25MM



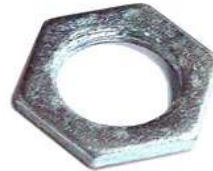
HALF SADDLE (HS-34, HS-1)	
MATERIAL	GALVANIZED STEEL
FINISH	GALVANIZED
AVAILABLE SIZES	20MM, 25MM
RECOMMENDED USE: BEST USED INDOORS, FOR LIGHT DUTY SUPPORT OF ALL TYPES OF CONDUIT PIPES.	



SOCKET JOINT (SJ-20, SJ-1)	
MATERIAL	GALVANIZED STEEL
FINISH	GALVANIZED
AVAILABLE SIZES	20MMM, 25MM



MALE BUSH – HEXAGON HEAD, SHORT TYPE (MB-20-BS, MB-25-BS)	
MATERIAL	BRASS / ALLOY
AVAILABLE SIZES	20MM, 25MM



LOCKNUTS – HEXAGON (LN-20, LN-25)	
MATERIAL	STEEL / ALLOY
FINISH	GALVANIZED
AVAILABLE SIZES	20MMM, 25MM



MALE BUSH – HEXAGON HEAD, LONG TYPE (MB-20-BS-L, MB-25-BS-L)	
MATERIAL	BRASS / ALLOY
AVAILABLE SIZES	20MMM, 25MM



CIRCULAR CONDUIT BOX COVER (C)	
MATERIAL	GALVANIZED STEEL
FINISH	GALVANIZED
AVAILABLE SIZES	NORMAL – FOR USE WITH 20MM & 25MM BOXES
	LARGE – FOR USE WITH 32MM BOXES



DOME COVER (SCREWED) (CF-DC-20-B3, CF-DC-25-E)	
MATERIAL	CAST IRON
FINISH	PLAIN GALVANIZED
FIXING CENTRE	50.5MM
AVAILABLE SIZES	20MMM, 25MM



PLUGS – BRASS SLOTTED (SP-20-B, SP-25-B)	
MATERIAL	BRASS
AVAILABLE SIZES	20MM, 25MM
NOTE: LARGER SIZE PLUGS ALSO AVAILABLE UPON REQUEST.	



REDUCER (CF-R-20X25-E)	
MATERIAL	GALVANIZED STEEL
FINISH	GALVANIZED

Copyright © 2008-2016 Tan Teck Seng Electric Co. Pte. Ltd. All rights reserved.  
Material data listed in this catalog supercedes all information in previous publications.



Tan Teck Seng Electric Co. (Pte) Ltd

137 Kaki Bukit Avenue 1, Shun Li Industrial Park, Singapore 416003

ttselect@tts.sg

All product dimension and material specification is as accurate as possible at time of publication.

Tan Teck Seng Electric Co. Pte. Ltd. reserves the right to change the design or specification of its products without notification.

Whilst utmost care has been taken to maintain accuracy in the data, the company does not hold any responsibility for errors and accepts no liability for the use or interpretation of this data.

# KNOCK-OUT (KO) BOXES



Steel Switch & Socket Box - 1 Gang (BS4662) (KO1E)	
Material	Galvanized Steel Sheet
Finish	Galvanized
Dimension	75 x 75 x 35mm
Fixing Centre	60.3mm to suit standard BS switch & socket outlets (Tapped earth hole at base of box)



Steel Switch & Socket Box - 2 Gang (BS4662) (KO2E)	
Material	Galvanized Steel Sheet
Finish	Galvanized
Dimension	135 x 75 x 35mm
Fixing Centre	120.6mm to suit standard BS switch & socket outlets (Tapped earth hole at base of box)



1G Hot Dipped CD Shelter Box (KO1-CD-HD)	
Material	Steel Sheet
Finish	Hot Dipped Galvanized
Dimension	75 x 75 x 35mm
Fixing Centre	60.3mm to suit standard BS switch & socket outlets (Tapped earth hole at base of box)



2G Hot Dipped CD Shelter Box (KO2-CD-HD)	
Material	Steel Sheet
Finish	Hot Dipped Galvanized
Dimension	135 x 75 x 35mm
Fixing Centre	120.6mm to suit standard BS switch & socket outlets (Tapped earth hole at base of box)

Copyright © 2008-2016 Tan Teck Seng Electric Co. Pte. Ltd. All rights reserved.  
Material data listed in this catalog supercedes all information in previous publications.



Tan Teck Seng Electric Co. (Pte) Ltd

137 Kaki Bukit Avenue 1, Shun Li Industrial Park, Singapore 416003

ttselect@tts.sg

All product dimension and material specification is as accurate as possible at time of publication.

Tan Teck Seng Electric Co. Pte. Ltd. reserves the right to change the design or specification of its products without notification.

Whilst utmost care has been taken to maintain accuracy in the data, the company does not hold any responsibility for errors and accepts no liability for the use or interpretation of this data.

# EMTECH® FLEXIBLE CONDUIT



PVC Coated Galvanized Flexible conduit fitted with a flexible adapter

PVC-Coated Galvanized Flexible Conduit	
<b>Features</b>	Water resistant, with maximum protection against most liquids and solid particles. High temperature heat resistance and self extinguishing black pvc sheathing. Manufactured to withstand vibrations of installations and equipment. Flexibility in installation. Wide range of conduit sizes.
<b>Applications</b>	Provide maximum protection of cables in installation against ingress of solid particles and liquids. It can be installed in most electrical applications where a good protective support for cables are needed. Used in areas as diverse as building automation systems, underfloor, machinery, air-con controls, lightning and power circuits installations and many other applications where good electrical support systems are needed.

Product Code	Outgoing G.I. Conduit Size (inch)	Length per coil (feet)
PCF16-E	5/8"	100
PCF20-E	3/4"	100
PCF25-E	1"	100
PCF32-E	1 1/4"	50
PCF38-E	1 1/2"	50
PCF50-E	2"	50
PCF63-E	2 1/2"	30
PCF75-E	3"	30
PCF100-E	4"	30



Flexible Steel Conduit (FP-34-SC, FP-1-SC)	
Material	Galvanized steel
Finish	Plain galvanized - unmarked
Available sizes	3/4", 1", 1 1/4", 1 1/2", 2"
Steel flexible conduit offers good mechanical protection when compared against upvc type.	



Flexible Adaptors (CF-BA-20X20-CN, CF-BA-25X1-CN, CF-BA-25X20-CN)	
Finish	Alloy/Brass finish supplied c/w retaining screw
Available sizes	3/4" x 5/8", 3/4" x 3/4", 1" x 3/4", 1" x 1", 1 1/4" x 1 1/4", 1 1/2" x 1 1/2", 2" x 2", 20 x 5/8, 20 x 3/4, 25 x 3/4, 25 x 1



Nickel Plated Flexible Adaptors (EM2020, EM2525)	
Finish	Nickel Plated
Available sizes	3/4" x 5/8", 3/4" x 3/4", 1" x 3/4", 1" x 1", 1 1/4" x 1 1/4", 1 1/2" x 1 1/2", 2" x 2", 20 x 5/8, 20 x 3/4, 25 x 3/4, 25 x 1



MI Flexible Adaptors (MI-2020, MI-2525)	
Material	Malleable Iron
Available sizes	16mm, 20mm, 25mm, 32mm, 38mm, 50mm
Note: Larger sizes also available upon request.	

EMTECH - Low Smoke Covered Flexible Conduit	
<b>Usage</b>	EMTECH - Low Smoke covered steel flexible conduit is ideal for use in areas where fire is of particular concern.
<b>Properties</b>	Resistance to flame, low (toxicity, smoke density)
<b>PSB Test Standard</b>	IEC 61034 Part 2

Item Number	Nominal Size	Length of Each Roll ft
PCF16-LSOH	16mm	100
PCF20-LSOH	20mm	100
PCF25-LSOH	25mm	100
PCF32-LSOH	32mm	50
PCF38-LSOH	38mm	50
PCF50-LSOH	50mm	50

Nickel Plated Flexible Adapter



EMTECH- Low Smoke covered steel flexible conduit

Copyright © 2008-2016 Tan Teck Seng Electric Co. Pte. Ltd. All rights reserved.  
Material data listed in this catalog supercedes all information in previous publications.



Tan Teck Seng Electric Co. (Pte) Ltd

137 Kaki Bukit Avenue 1, Shun Li Industrial Park, Singapore 416003

ttselect@tts.sg

All product dimension and material specification is as accurate as possible at time of publication.

Tan Teck Seng Electric Co. Pte. Ltd. reserves the right to change the design or specification of its products without notification.

Whilst utmost care has been taken to maintain accuracy in the data, the company does not hold any responsibility for errors and accepts no liability for the use or interpretation of this data.

# OTHER TOOLS & ACCESSORIES

Cable Roller (CR6)



C-Bracket (B-3, B-4, B-6, B-8)



L-Bracket (B-HR)



Hanging Rod (HR-1, HR-2)



Spring-Clip (B-SC)



Con-Clip  
(CC-C12, CC-C16, CC-C20)



Conduit Pipe Bender  
(CF-CB-M)

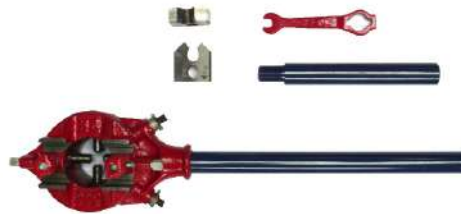


Heavy Duty Conduit Pipe Bender  
(CF-CB-E)



← Heavy Metal Plate

Automatic Die Set  
(CF-AD)



3/4" Die  
1" Die  
20mm Die  
25mm Die

Manual Die Set - Metric Threading  
(CF-MD)



20mm Die  
25mm Die

\* Optional 32mm Die



Tan Teck Seng Electric Co. (Pte) Ltd

137 Kaki Bukit Avenue 1, Shun Li Industrial Park, Singapore 416003

ttselect@tts.sg

All product dimension and material specification is as accurate as possible at time of publication.

Tan Teck Seng Electric Co. Pte. Ltd. reserves the right to change the design or specification of its products without notification.

Whilst utmost care has been taken to maintain accuracy in the data, the company does not hold any responsibility for errors and accepts no liability for the use or interpretation of this data.

## BS4568 / IEC61386 CLASS 3 PROJECT REFERENCE

PROJECT	CONSULTANT
Hoy Fatt Rd 6th Storey Factory	PTP Engineers
KLA Serangoon North Factory	HY M&E
Marina Barrage	CDM SG Pte Ltd
IM Flash	M+W Zander (S) Pte Ltd
Avenue Park Condo	Rankine & Hill (S) Pte Ltd
60 Robinson Rd	JRP
Siltronic	M+W Zander (S) Pte Ltd
Buckley 18	Mott MacDonald Singapore Pte Ltd
The Rochester	J Roger Preston (S) Pte Ltd
Orchard Residences	Squire Mech Pte Ltd
ITE West	APP Engineering Pte Ltd

Copyright © 2008-2016 Tan Teck Seng Electric Co. Pte. Ltd. All rights reserved.

All content in this catalogue, including (but not limited to) the layout, design, images, brand names and other information, are protected by copyright and other intellectual property laws. Except when expressly permitted under these laws, no part of the information contained herein may be reproduced or transmitted in any form or by any means (electronic, mechanical, photocopying, recording, or otherwise), or used for advertising or promotional purposes, general distribution, creating new collective works, or for resale, without prior written permission of Tan Teck Seng Electric Co. Pte. Ltd.

All product dimension and material specification is as accurate as possible at time of publication.

Tan Teck Seng Electric Co. Pte. Ltd. reserves the right to change the design or specification of its products without notification.

Whilst utmost care has been taken to maintain accuracy in the data, the company does not hold any responsibility for errors and accepts no liability for the use or interpretation of this data.



Tan Teck Seng Electric Co. (Pte) Ltd

137 Kaki Bukit Avenue 1, Shun Li Industrial Park, Singapore 416003

ttselect@tts.sg