

EMTECH® BS4568 / IEC61386 CONDUIT PIPE



Resort World Sentosa



REC @ Tuas



Alcon Factory @ Tuas



Temasek Laboratories and NUS Engineering Faculty



SMRT Projects



Orchard Residences



ITE West



Lonza Biomedical Plant at Tuas



Regency Suite



Marina Barrage



IM Flash



TM



EMTECH BS4568/IEC61386 CLASS 4 20MM



EMTECH BS4568/IEC61386 CLASS 4 25MM



EMTECH BS4568/IEC61386 CLASS 4 32MM

BS4568 / IEC61386 Class 4 Conduit Pipe



EMTECH BS4568/IEC61386 CLASS 3 20MM



EMTECH BS4568/IEC61386 CLASS 3 25MM

BS4568 / IEC61386 Class 3 Conduit Pipe



BS4568 / IEC61386 Conduit Fittings & Accessories

Copyright © 2008-2017 Tan Teck Seng Electric Co. Pte. Ltd. All rights reserved.
Material data listed in this catalog supercedes all information in previous publications.



Tan Teck Seng Electric Co. (Pte) Ltd

137 Kaki Bukit Avenue 1, Shun Li Industrial Park, Singapore 416003

ttselect@tts.sg

Tel: 6747-8833 Fax: 6747 0370

All product dimension and material specification is as accurate as possible at time of publication.

Tan Teck Seng Electric Co. Pte. Ltd. reserves the right to change the design or specification of its products without notification.

Whilst utmost care has been taken to maintain accuracy in the data, the company does not hold any responsibility for errors and accepts no liability for the use or interpretation of this data.

EMTECH® BS4568 / IEC61386 CONDUIT PIPE



陳德盛電器(私人)有限公司
TAN TECK SENG ELECTRIC CO. (PTE) LTD.

Tan Teck Seng Electric Co Pte Ltd Company has been established since 1973. Being a supplier in the electrical industries for the past 3 decades, its core businesses lie in supplying electrical products to mostly M&E contractors and people in the construction and building related industries. Electrical products such as cable support system, conduits and accessories and lightning protection system are then provided.

Having been in the business of electric fittings for more than thirty years, we pride ourselves for the valuable knowledge and experience in the needs and design of conduit accessories to meet the challenge of the new millennium. In this catalogue, we offer a broad and comprehensive range of galvanized steel and brass conduit accessories which will match the demands of any projects using BS4568 / IEC61386 conduits. It is our hope that you will find the product details informative and applicable to your needs. We assure our customers that we will continue to expand and improve the range of products.



CP-20-E / CP-25-E / CP-32-E



CP-20-P / CP-25-P

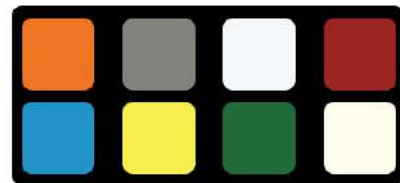
EMTECH Brand BS4568 / IEC61386 Class 4 Hot Dipped Galvanised Steel Conduit				
Nominal Size	Outer Diameter		Wall Thickness ±	Weight per Length
	Min	Max		
mm	mm	mm	mm	kg/length
20	19.7	20.0	1.6±0.15	±2.90
25	24.6	25.0	1.6±0.15	±3.70
32	31.6	32.0	1.6±0.15	±4.80
Standard length 3.75m Other length available upon request.				

EMTECH Brand BS4568 / IEC61386 Class 3 Galvanised Steel Conduit				
Nominal Size	Outer Diameter		Wall Thickness ±	Weight per Length
	Min	Max		
mm	mm	mm	mm	kg/length
20	19.7	20.0	1.6±0.15	±2.70
25	24.6	25.0	1.6±0.15	±3.40
32	31.6	32.0	1.6±0.15	±4.50
Standard length 3.75m Other length available upon request.				

Epoxy Powder Coated
Conduits & Accessories are available
to suit your M&E services requirement.



ORANGE GREY WHITE RED



BLUE YELLOW ARMY IVORY
GREEN

Colour Chart (Standard Colors)

The accuracy of colors shown in this chart are only as close as the printing process will allow.
Other colors available upon request.

Copyright © 2008-2017 Tan Teck Seng Electric Co. Pte. Ltd. All rights reserved.
Material data listed in this catalog supersedes all information in previous publications.



Tan Teck Seng Electric Co. (Pte) Ltd

137 Kaki Bukit Avenue 1, Shun Li Industrial Park, Singapore 416003

ttselect@tts.sg

Tel: 6747-8833 Fax: 6747 0370

All product dimension and material specification is as accurate as possible at time of publication.

Tan Teck Seng Electric Co. Pte. Ltd. reserves the right to change the design or specification of its products without notification.

Whilst utmost care has been taken to maintain accuracy in the data, the company does not hold any responsibility for errors and accepts no liability for the use or interpretation of this data.

BS4568 / IEC61386 EMTECH® CONDUIT BOXES



Conduit Boxes	
Finish	Hot-Dipped Galvanized
Fixing Centre	50.8mm ± 0.5mm
Size	20mm, 25mm, 32mm



**Terminal /
1 Way**

CF-1W-20-E
CF-1W-25-E
CF-1W-32-E



**Through /
2 Way**

CF-2W-20-E
CF-2W-25-E
CF-2W-32-E



Angle

CF-AN-20-E
CF-AN-25-E
CF-AN-32-E



**Tee /
3 Way**

CF-3W-20-E
CF-3W-25-E
CF-3W-32-E



**Cross /
4 Way**

CF-4W-20-E
CF-4W-25-E
CF-4W-32-E



**Terminal /
1 Way with
Hole**

CF-1W-H-20-E
CF-1W-H-25-E
CF-1W-H-32-E



**Terminal
/ 1 Way
with Back
Outlet**

CF-1W-BO-20-E
CF-1W-BO-25-E

Copyright © 2008-2017 Tan Teck Seng Electric Co. Pte. Ltd. All rights reserved.
Material data listed in this catalog supersedes all information in previous publications.



Tan Teck Seng Electric Co. (Pte) Ltd

137 Kaki Bukit Avenue 1, Shun Li Industrial Park, Singapore 416003

ttselect@tts.sg

Tel: 6747-8833 Fax: 6747 0370

All product dimension and material specification is as accurate as possible at time of publication.

Tan Teck Seng Electric Co. Pte. Ltd. reserves the right to change the design or specification of its products without notification.

Whilst utmost care has been taken to maintain accuracy in the data, the company does not hold any responsibility for errors and accepts no liability for the use or interpretation of this data.

BS4568 EMTECH® ACCESSORIES

C-E



Circular Conduit Box Cover	
Material	Galvanized steel
Finish	Hot-Dipped Galvanized
Available Sizes	Small – for use with 20mm & 25mm boxes
Note: Rubber gasket to suit above covers also available on order.	

SB-20-E / SB-25-E / SB-32-E



Bar Saddle	
Material	Galvanized steel base and strap of G20 thickness
Finish	Hot-Dipped Galvanized
Available sizes	20mm ~ 32mm

CF-DC-20-E / CF-DC-25-E



Dome Cover (Screwed)	
Finish	Hot-Dipped Galvanized
Fixing Centre	50.5mm
Available sizes	20mm, 25mm

KOC1



K.O. Box Cover - 1 Gang	
Material	Steel
Finish	Plain or Hot Dipped Galvanized

KOC2



K.O. Box Cover - 2 Gang	
Material	Steel
Finish	Plain or Hot Dipped Galvanized

SP-20-B / SP-25-B



Stop Plugs	
Finish	Brass
Available sizes	20mm ~ 32mm
Note: Larger size plugs also available upon request.	

MB-20-BS-L / MB-25-BS-L / MB-32-BS-L



Male Bush – Hexagon head, long type	
Finish	Brass
Available sizes	20mm ~ 32mm

C-B



Circular Conduit Box Cover 32mm	
Material	Galvanized steel
Finish	Hot-Dipped Galvanized
Size	Large - for use with 32mm above sizes
Note: Rubber gasket to suit above covers also available on order.	

S-20-E / S-25-E / S-32-E



Socket	
Material	Galvanized steel
Finish	Hot-Dipped Galvanized
Available sizes	20mm ~ 32mm

SJ-20 / SJ-25



Socket Joint	
Material	Galvanized steel
Finish	Galvanized
Available sizes	20mm, 25mm

PS-25-HD / PS-32-HD



Plain Saddle	
Finish	Hot Dipped Galvanized
Available sizes	20mm ~ 32mm

CF-R-20X25-E / CF-R-25X32-E



Reducer	
Material	Brass / Alloy
Finish	Galvanized
Available sizes	25mm to 20mm, 32mm to 25mm

LN-20 / LN-25 / LN-32
LN-20-B / LN-25-B / LN-32-B



Locknuts – Hexagon	
Material	Steel / Brass
Finish	Galvanized
Available sizes	20mm ~ 32mm

MB-20-BS / MB-25-BS / MB-32-BS



Male Bush – Hexagon head, short type	
Finish	Brass
Available sizes	20mm ~ 32mm

Copyright © 2008-2017 Tan Teck Seng Electric Co. Pte. Ltd. All rights reserved.
Material data listed in this catalog supercedes all information in previous publications.



Tan Teck Seng Electric Co. (Pte) Ltd

137 Kaki Bukit Avenue 1, Shun Li Industrial Park, Singapore 416003

ttselect@tts.sg

All product dimension and material specification is as accurate as possible at time of publication.

Tan Teck Seng Electric Co. Pte. Ltd. reserves the right to change the design or specification of its products without notification.

Whilst utmost care has been taken to maintain accuracy in the data, the company does not hold any responsibility for errors and accepts no liability for the use or interpretation of this data.

KNOCK-OUT (KO) BOXES



KO1E

Steel Switch & Socket Box - 1 Gang (BS4662)	
Material	Galvanized Steel Sheet
Finish	Galvanized
Dimension	75 x 75 x 35mm
Fixing Centre	60.3mm to suit standard BS switch & socket outlets (Tapped earth hole at base of box)



KO2E

Steel Switch & Socket Box - 2 Gang (BS4662)	
Material	Galvanized Steel Sheet
Finish	Galvanized
Dimension	135 x 75 x 35mm
Fixing Centre	120.6mm to suit standard BS switch & socket outlets (Tapped earth hole at base of box)



KO1-CD-HD

1G Hot Dipped CD Shelter Box	
Material	Steel Sheet
Finish	Hot Dipped Galvanized
Dimension	75 x 75 x 35mm
Fixing Centre	60.3mm to suit standard BS switch & socket outlets (Tapped earth hole at base of box)



KO2-CD-HD

2G Hot Dipped CD Shelter Box	
Material	Steel Sheet
Finish	Hot Dipped Galvanized
Dimension	135 x 75 x 35mm
Fixing Centre	120.6mm to suit standard BS switch & socket outlets (Tapped earth hole at base of box)

Copyright © 2008-2017 Tan Teck Seng Electric Co. Pte. Ltd. All rights reserved.
Material data listed in this catalog supercedes all information in previous publications.



Tan Teck Seng Electric Co. (Pte) Ltd

137 Kaki Bukit Avenue 1, Shun Li Industrial Park, Singapore 416003

ttselect@tts.sg

All product dimension and material specification is as accurate as possible at time of publication.

Tan Teck Seng Electric Co. Pte. Ltd. reserves the right to change the design or specification of its products without notification.

Whilst utmost care has been taken to maintain accuracy in the data, the company does not hold any responsibility for errors and accepts no liability for the use or interpretation of this data.

EMTECH® FLEXIBLE CONDUIT



PVC Coated Galvanized Flexible conduit fitted with a flexible adapter

PCF

PVC-Coated Galvanized Flexible Conduit	
Features	Water resistant, with maximum protection against most liquids and solid particles. High temperature heat resistance and self extinguishing black pvc sheathing. Manufactured to withstand vibrations of installations and equipment. Flexibility in installation. Wide range of conduit sizes.
Applications	Provide maximum protection of cables in installation against ingress of solid particles and liquids. It can be installed in most electrical applications where a good protective support for cables are needed. Used in areas as diverse as building automation systems, underfloor, machinery, air-con controls, lightning and power circuits installations and many other applications where good electrical support systems are needed.

Catalogue Number	Outgoing G.I. Conduit Size (inch)	Length per coil (feet)
PCF16	5/8"	100
PCF20	3/4"	100
PCF25	1"	100
PCF32	1 1/4"	50
PCF38	1 1/2"	50
PCF50	2"	50
PCF63	2 1/2"	30
PCF75	3"	30
PCF100	4"	30

FP



Flexible Steel Conduit	
Material	Galvanized steel
Finish	Plain galvanized - unmarked
Available sizes	3/4", 1", 1 1/4", 1 1/2", 2"
Steel flexible conduit offers good mechanical protection when compared against upvc type.	

CF-BA



Flexible Adaptors	
Finish	Brass c/w retaining screw
Available sizes	3/4" x 5/8", 3/4" x 3/4", 1" x 3/4", 1" x 1", 1 1/4" x 1 1/4", 1 1/2" x 1 1/2", 2" x 2", 20 x 5/8, 20 x 3/4, 25 x 3/4, 25 x 1

EM



Nickel Plated Flexible Adaptors	
Finish	Nickel Plated
Available sizes	3/4" x 5/8", 3/4" x 3/4", 1" x 3/4", 1" x 1", 1 1/4" x 1 1/4", 1 1/2" x 1 1/2", 2" x 2", 20 x 5/8, 20 x 3/4, 25 x 3/4, 25 x 1

MI



MI Flexible Adaptors	
Material	Malleable Iron
Available sizes	16mm, 20mm, 25mm, 32mm, 38mm, 50mm
Note: Larger sizes also available upon request.	

PCF-LSOH

EMTECH - Low Smoke Covered Flexible Conduit	
Usage	EMTECH - Low Smoke covered steel flexible conduit is ideal for use in areas where fire is of particular concern.
Properties	Resistance to flame, low (toxicity, smoke density)
PSB Test Standard	IEC 61034 Part 2

Item Number	Nominal Size	Length of Each Roll ft
PCF16-LSOH	16mm	100
PCF20-LSOH	20mm	100
PCF25-LSOH	25mm	100
PCF32-LSOH	32mm	50
PCF38-LSOH	38mm	50
PCF50-LSOH	50mm	50

Nickel Plated Flexible Adapter



EMTECH- Low Smoke covered steel flexible conduit

Copyright © 2008-2017 Tan Teck Seng Electric Co. Pte. Ltd. All rights reserved.
Material data listed in this catalog supercedes all information in previous publications.



Tan Teck Seng Electric Co. (Pte) Ltd

137 Kaki Bukit Avenue 1, Shun Li Industrial Park, Singapore 416003

ttselect@tts.sg

All product dimension and material specification is as accurate as possible at time of publication.

Tan Teck Seng Electric Co. Pte. Ltd. reserves the right to change the design or specification of its products without notification.

Whilst utmost care has been taken to maintain accuracy in the data, the company does not hold any responsibility for errors and accepts no liability for the use or interpretation of this data.

OTHER TOOLS & ACCESSORIES

Cable Roller



C-Bracket



L-Bracket



Hanging Rod



Spring-Clip



Kon-Clip



Conduit Pipe Bender



Heavy Duty Conduit Pipe Bender



Automatic Die Set



Polyfoam



PVC Junction Box



Beam Clamp



Product Code	Threaded Rod Dia.	Beam Thickness (mm)
BC-10	3/8" / M10	20mm Max
BC-10-B	3/8" / M10	26mm Max
BC-12	M12	26mm Max

Drill Bit



Nylon Wall Plug



Hole Saw



Spray Paint



Masking Tape / PVC Tape / Colour Band



Tan Teck Seng Electric Co. (Pte) Ltd

137 Kaki Bukit Avenue 1, Shun Li Industrial Park, Singapore 416003

ttselect@tts.sg

All product dimension and material specification is as accurate as possible at time of publication.

Tan Teck Seng Electric Co. Pte. Ltd. reserves the right to change the design or specification of its products without notification.

Whilst utmost care has been taken to maintain accuracy in the data, the company does not hold any responsibility for errors and accepts no liability for the use or interpretation of this data.

BS4568 CLASS 4 PROJECT REFERENCE

PROJECT	CONSULTANT
Regency Suite	Parsons Brinckerhoff Pte Ltd
Duke -NUS Graduate Medical School	CPG Consultants Pte Ltd
Lonza Biomedical Plant at Tuas	Jacobs Lend Lease
Temasek Laboratories and NUS Engineering Faculty	Defence Science and Technology Agency
HDB Lift Upgrading Project	CPG Consultants Pte Ltd
Woodlands Linkway	EM Services Pte Ltd
SMRT Station Upgrading	LTA
SMRT C1319B Contract	LTA
SMRT Circle Line 1H01 Contract	LTA
CCTV Enhancement for North/South/East/West Lines	LTA
SMRT Circle Line Stage 4 & 5 C832B	LTA
Alcon Factory in Tuas South	Jacobs Engineering
REC Factory in Tuas South	Squire Mech
Resort World Sentosa	Meinhardt (S) Pte Ltd
F&N Coca Cola Factory in Tuas	Squire Mech
Ocean Financial Centre	Parsons Brinckerhoff Pte Ltd

BS4568 CLASS 3 PROJECT REFERENCE

PROJECT	CONSULTANT
Hoy Fatt Rd 6th Storey Factory	PTP Engineers
KLA Serangoon North Factory	HY M&E
Marina Barrage	CDM SG Pte Ltd
IM Flash	M+W Zander (S) Pte Ltd
Avenue Park Condo	Rankine & Hill (S) Pte Ltd
60 Robinson Rd	JRP
Siltronic	M+W Zander (S) Pte Ltd
Buckley 18	Mott MacDonald Singapore Pte Ltd
The Rochester	J Roger Preston (S) Pte Ltd
Orchard Residences	Squire Mech Pte Ltd
ITE West	APP Engineering Pte Ltd

Copyright © 2008-2017 Tan Teck Seng Electric Co. Pte. Ltd. All rights reserved.

All content in this catalogue, including (but not limited to) the layout, design, images, brand names and other information, are protected by copyright and other intellectual property laws. Except when expressly permitted under these laws, no part of the information contained herein may be reproduced or transmitted in any form or by any means (electronic, mechanical, photocopying, recording, or otherwise), or used for advertising or promotional purposes, general distribution, creating new collective works, or for resale, without prior written permission of Tan Teck Seng Electric Co. Pte. Ltd.

All product dimension and material specification is as accurate as possible at time of publication.

Tan Teck Seng Electric Co. Pte. Ltd. reserves the right to change the design or specification of its products without notification.

Whilst utmost care has been taken to maintain accuracy in the data, the company does not hold any responsibility for errors and accepts no liability for the use or interpretation of this data.



Tan Teck Seng Electric Co. (Pte) Ltd

137 Kaki Bukit Avenue 1, Shun Li Industrial Park, Singapore 416003

ttselect@tts.sg